

TESTIMONIAL

LARRY LEE

Haleyon Embassy Suites Project
Manager for Sun Development



"Without DIV005, LLC, I don't know how we could have done this project. They have been a joy to work with and I look forward to doing more projects with them."

BILLY BROWN

CEO Benchmark Development Group



"We have had a great relationship with DIV005, LLC. After visiting multiple plants and lots of research, I got this one right. I chose the right company with the right relationship. I have been very pleased, and it was a great experience. DIV005, LLC is certainly in consideration for all our future projects."

LEE SHUMAN

VP of Construction-Peachtree Hotel Group



"DIV005, LLC took a complicated project, with angled first floor and roof, with a roof top bar and successfully completed it, with very little issue. It was remarkable to see."

WHY US?

DIV005, LLC is a proven leader in the cold-formed steel industry, with a proven track record of over 25 years' experience. We aim to resolve your development challenges by facilitating faster design & engineering, expedited permitting, and eliminating constraints, as a result, faster time to market, and return on investment. Benefits to Owners, Developers, Architects, Engineers, Design-Build Firms, and Trades.

CONTACT US:



+1 229-794-0020



marketing@div005.com



7491 Sonny Rogers
Memorial Drive Hahira,
Georgia 31632



- ✓ Speed
- ✓ Flexibility
- ✓ Quality
- ✓ Performance
- ✓ Thermal



Manufacturing A Better Way To BUILD

DIV005, LLC is a single source for design, supply, and installation of five of the Master Specification Division 05 Metal



SAFETY

DIV005 enforces high priority on Safety in our manufacturing facilities as well as on all of our job sites.



INSURANCE

DIV005 carries full commercial general liability, automobile/truck liability along with Workers Compensation.



DRUG FREE WORKPLACE

DIV005 is a drug-free company – Zero tolerance in our facilities and job sites. All employees subject to drug tests.

ABOUT US:

DIV005, LLC is a proven leader in the cold-formed steel industry, with a proven track record of over 25 years' experience. We aim to resolve your development challenges by facilitating faster design & engineering, expedited permitting, and eliminating constraints, as a result, faster time to market, and return on investment. Benefits to Owners, Developers, Architects, Engineers, Design-Build Firms, and Trades.

- Engineer of Record Services, advanced complete 3D design, specialty engineering, and shop drawings.
- Fully integrated with our cutting-edge and proprietary roll forming technology in our 60,000+ square foot facility.
- Contracted steel erection crews deliver faster installation.
- Superior product, non-combustible, environmentally resistant, owner's risk and owner's risk and insurance costs reduced, 100% recyclable with less than 1% waste during production and installation.

OUR UNIQUE BUSINESS MODEL:

- Pre-construction analysis & budgeting.
- Construct-ability reviews; site logistics, coordination with other trades.
- Controlled and concise offsite fabrication, tightly scheduled with the coordinated installation.

STEEL FEATURES:

Cold Formed Steel (CFS) reduces overall construction costs, decrease waste and discounts on builders risk insurance. Resistant to mold, termites, and corrosion, warping, splitting, or cracking. Fire resistant & Acoustic Insulation properties. Our advanced steel systems are 100% recyclable, inorganic, non-combustible. Our state-of-the-art manufacturing process yields less than 1% waste during production and 0% waste during onsite installation. This sophisticated approach enables stakeholders to predetermine all elements of the project before the construction process even starts. This leads to a more efficient building process, which drastically diminishes wasted materials, minimizes fuel consumption, and reduces the overall ecological footprint during construction.



SPEED OF CONSTRUCTION

Prefabricated components shorten construction periods compared to traditional construction methods. The time saved using CFS represents 3-5% of overall project value. This is crucial to the project stakeholders and decision makers.



FLEXIBILITY AND ADAPTABILITY

Long Span Steel construction creates column-free spaces allowing internal partitions to be pre-configured on floor plans in order to meet current and future requirements. Shallow floor systems can provide a 'flat' soffit without down-stand beams and permit complete flexibility of internal wall layouts.



QUALITY

Construction quality is achieved by our factory controlled production. Off-site construction reduces dependency on-site trades and is less prone to delays due to inclement weather.



VIBRATION AND ACOUSTIC PERFORMANCE

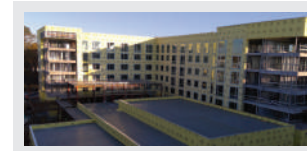
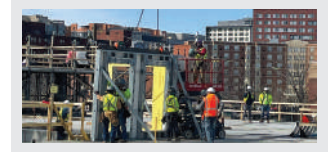
Cold-Formed Steel construction can be designed to achieve high levels of acoustic insulation and low vibration response that meet stringent NHS requirements, without compromising structural efficiency.



THERMAL INSULATION

Light steel infill walls can provide a higher degree of thermal insulation. The insulation material is placed outside the steel frames to create a 'warm frame', which reduces thermal bridging.

OUR PROJECTS



PRODUCTS & SERVICES:

We are a Cold Formed Structural Steel Company offering Design, Engineering, and Professional Installation service for the below products

- Light Gauge non-structural Metal Framing.
- CFS Wall Panels- Load Bearing and Non-Load Bearing
- CFS Roof and Floor Trusses
- Flooring systems: Composite Deck, Steel Floor Joist, iSpan, Eco-Span, etc.
- Structural Steel and Stairs / with CFS framing.
- Drywall services on certain projects and in certain areas.

Our system builds are 33% faster and have a larger cost savings by using lighter yet stronger, non-combustible designs. Ask about additional savings available through Zurich Insurance.

